

# Archaeological Services & Consultancy Ltd

## **EXCAVATION AND WATCHING BRIEF: ST JOHN THE BAPTIST CHURCH GRANBOROUGH BUCKINGHAMSHIRE**

NGR: SP 7678 2500

*on behalf of Vicar and Parochial Church Council*



Carina Summerfield-Hill BA MSc

November 2010

ASC: 1340/GSJ/3



Letchworth House  
Chesney Wold, Bleak Hall  
Milton Keynes MK6 1NE  
Tel: 01908 608989 Fax: 01908 605700  
Email: [office@archaeological-services.co.uk](mailto:office@archaeological-services.co.uk)  
Website: [www.archaeological-services.co.uk](http://www.archaeological-services.co.uk)



## Site Data

<i>ASC project code:</i>	GSJ	<i>ASC Project No:</i>	1340
<i>OASIS ref:</i>	archaeol2-80145	<i>Event/Accession no:</i>	AYBCM 2010:122
<i>County:</i>	Buckinghamshire		
<i>Village/Town:</i>	Granborough		
<i>Civil Parish:</i>	Granborough		
<i>NGR (to 8 figs):</i>	SP 7678 2500		
<i>Extent of site:</i>	c.108 sq m		
<i>Present use:</i>	Church and churchyard		
<i>Planning proposal:</i>	Construction of a new toilet and associated drainage		
<i>Planning application ref/date:</i>	10/00199/APP		
<i>Local Planning Authority:</i>	Aylesbury Vale District Council		
<i>Date of fieldwork:</i>	13/09/10-14/09/10, 16/09/10, 20/09/10-22/09/10, 06/10/10		
<i>Client:</i>	Granborough Parochial Church Council c/o Jenny Dean 2 Hollow Hill End Granborough Buckinghamshire MK18 3NU		
<i>Contact name:</i>	Jenny Dean (Church Warden)		

## Internal Quality Check

<i>Primary Author:</i>	Carina Summerfield-Hill	<i>Date:</i>	15/11/10
<i>Revisions:</i>	Carina Summerfield-Hill	<i>Date:</i>	27/09/10
<i>Edited/Checked By:</i>		<i>Date:</i>	15/11/2010

© Archaeological Services & Consultancy Ltd

No part of this document is to be copied in any way without prior written consent.

Every effort is made to provide detailed and accurate information. However, Archaeological Services & Consultancy Ltd cannot be held responsible for errors or inaccuracies within this report.

© Ordnance Survey maps reproduced with the sanction of the Controller of Her Majesty's Stationery Office.  
ASC Licence No. AL 100015154

## CONTENTS

Summary.....	4
1. Introduction .....	4
2. Aims & Methods .....	7
3. Archaeological & Historical Background.....	8
4. Results. ....	9
5. Conclusions .....	17
6. Acknowledgements .....	18
7. Archive .....	18
8. References .....	19

### Appendices:

1. ASC Watching Brief Monitoring Sheets .....	20
2. Finds Concordance .....	30
3. Photo List.....	31
4. ASC OASIS Form .....	33

### Figures:

1. General location .....	3
2. Site plan .....	5
3. Proposed development and indicative excavation and watching brief areas .....	6
4. Development plan highlighting excavation and watching brief areas and limestone surface.....	16

### Plates:

*Cover:* General view of church, looking SE

1. North facing section of soakaway, looking S.....	11
2. Excavation area of new build and footing trench, looking NW .....	11
3. New toilet area excavated a further 300mm exposing limestone surface towards the east, looking south .....	11
4. Limestone surface at northern end of footing trench, looking W.....	11
5. Limestone surface at northern end of footing trench, looking E.....	12
6. Limestone surface at southern end of footing trench, looking W .....	12
7. Limestone surface detail at southern end of footing trench, looking S.....	12
8. West facing section of eastern end of footing trench highlighting limestone surface in section, looking E.....	12
9. Finds deriving from limestone surface area.....	13
10. Finds deriving from footing trench .....	13
11. General view of service trench 1, looking NW .....	13
12. NE facing section of service trench 1, looking NW .....	14
13. General view of soakaway with service trench 2 and 3, looking N.....	14
14. N facing section of service trench 3, looking S.....	14
15. General view of service trench 4, looking NE .....	14
16. E facing section of service trench 4, looking W.....	15
17. Finds deriving from service trenches .....	15

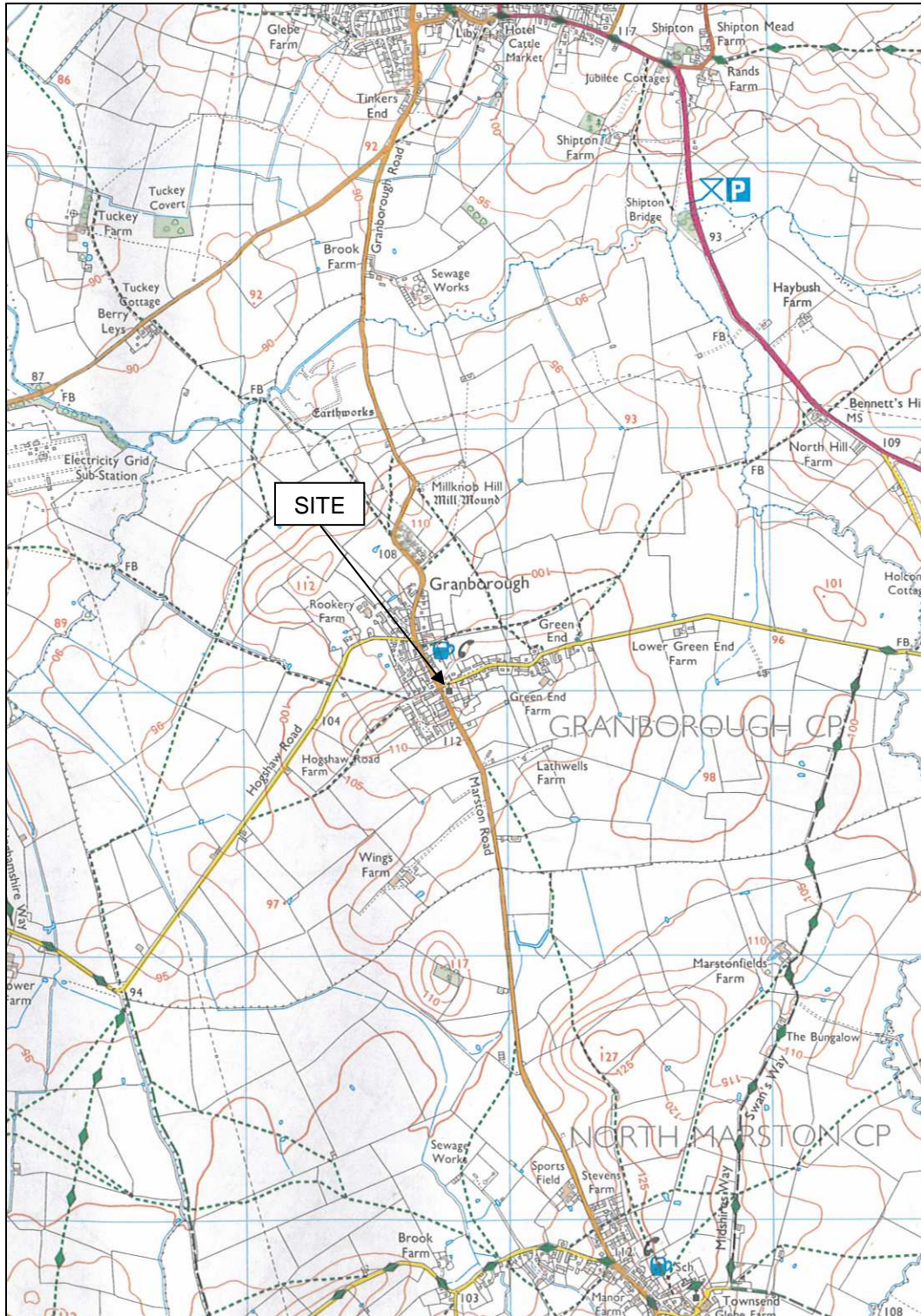


Figure 1: General location (scale 1:25,000)

## Summary

*In September/October 2010 Archaeological Services and Consultancy Ltd carried out an excavation and watching brief at St John the Baptist Church, Granborough, Buckinghamshire during the development of a new toilet and associated services. The development area was void of any articulated human burials, with two fragments of disarticulated human bone. A limestone surface was excavated that is likely post-medieval in date.*

### 1. Introduction

1.1 In September/October 2010 *Archaeological Services and Consultancy Ltd* (ASC) carried out an excavation and watching brief at St John the Baptist Church, Granborough, Buckinghamshire. The project was commissioned by client, *the Vicar and Parochial Church Council*, and was carried out according to a generic brief prepared on behalf of the local planning authority (LPA), *Aylesbury Vale District Council*, by their archaeological advisor (AA), *Buckinghamshire County Archaeological Service*, and a project design prepared by ASC. The relevant planning application reference is 10/00199/APP.

#### 1.2 *Planning Background*

This watching brief was required under the terms of *Planning Policy Statement 5* (PPS5), as a condition of planning permission for the development of the site.

#### 1.3 *Archaeological Services & Consultancy Ltd*

ASC is an independent archaeological practice providing a full range of archaeological services including consultancy, field evaluation, mitigation and post-excavation studies, historic building recording and analysis. ASC is recognised as a *Registered Organisation* by the Institute for Archaeologists and is also accredited ISO 9001, in recognition of its high standards and working practices.

#### 1.4 *The Site*

##### 1.4.1 *Location & Description*

The site lies in the parish of Granborough in the administrative district of Aylesbury Vale, Buckinghamshire. The site is centred on Ordnance Survey National Grid Reference SP7678 2500 (Fig. 1).

The church and its grounds encompass a rectangular plot of land c.2964 sq m. The site is located at the junction of Green End and Marston Road, both of which provide site access (Fig. 2).

The parish church of St John the Baptist dates from the 14<sup>th</sup> century and is built of stone rubble with dressings of clunch and stone. The church consists of a chancel, nave and a west tower.

#### 1.4.2 Geology & Topography

The geology of the site comprises drift glaciofluvial deposits of sand and gravel (BGS, Sheet 219). The soils fall into the Evesham 2 association described as *slowly permeable calcareous clayey soils. Some slowly permeable seasonally waterlogged non-calcareous clayey and fine loamy or fine silty over clayey soils. Landslips and associated irregular terrain locally* (Soil Survey 1983, 411b, Sheet 4). The site lies at an elevation level of *c.110 m OD*. The topography of the development area slightly slopes downward in an N-S direction.

#### 1.4.3 Proposed Development

The proposed development comprises a new toilet towards the western boundary of the church and associated services (Fig. 3).

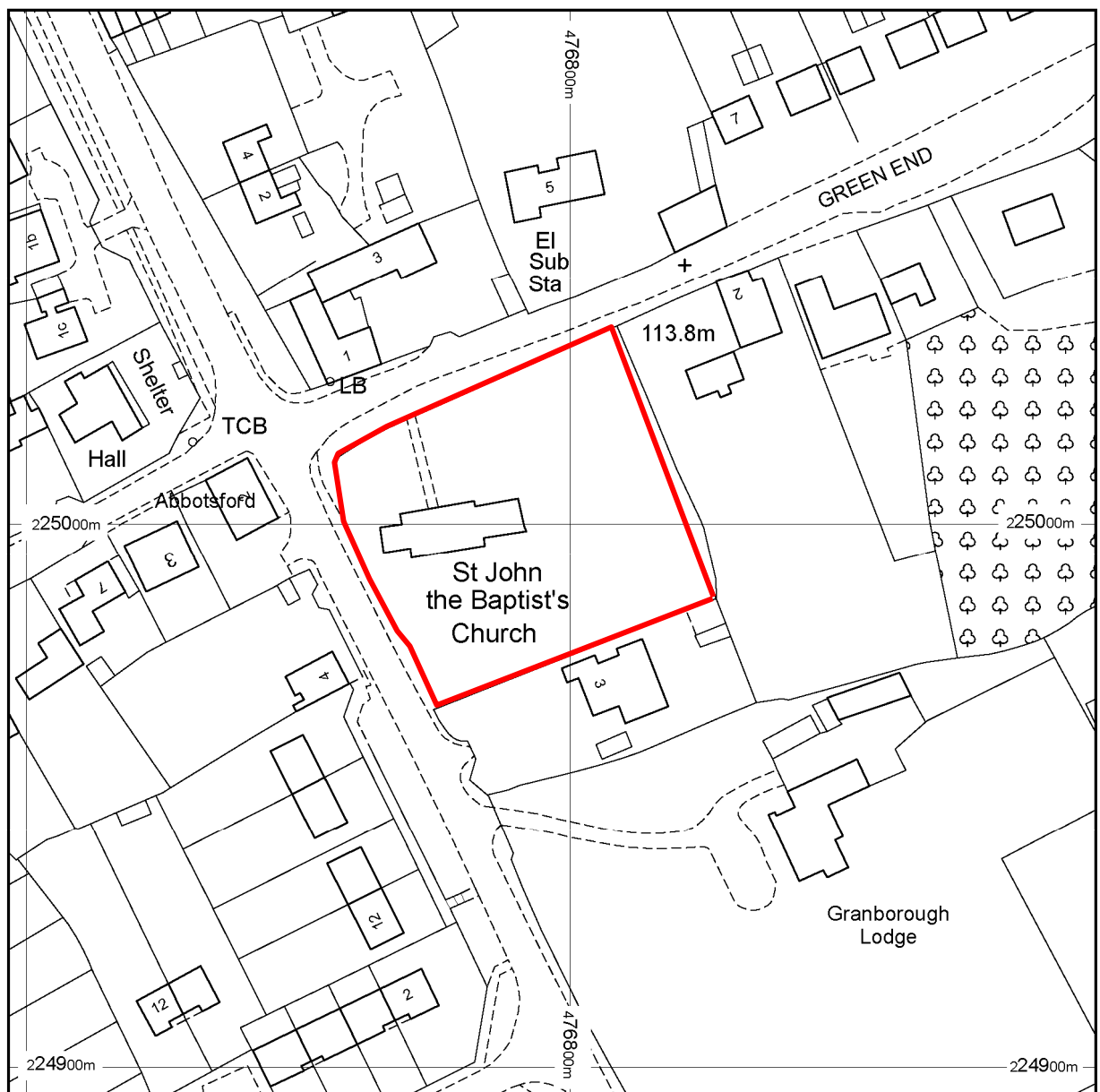


Figure 2: Site plan (scale 1: 1250)

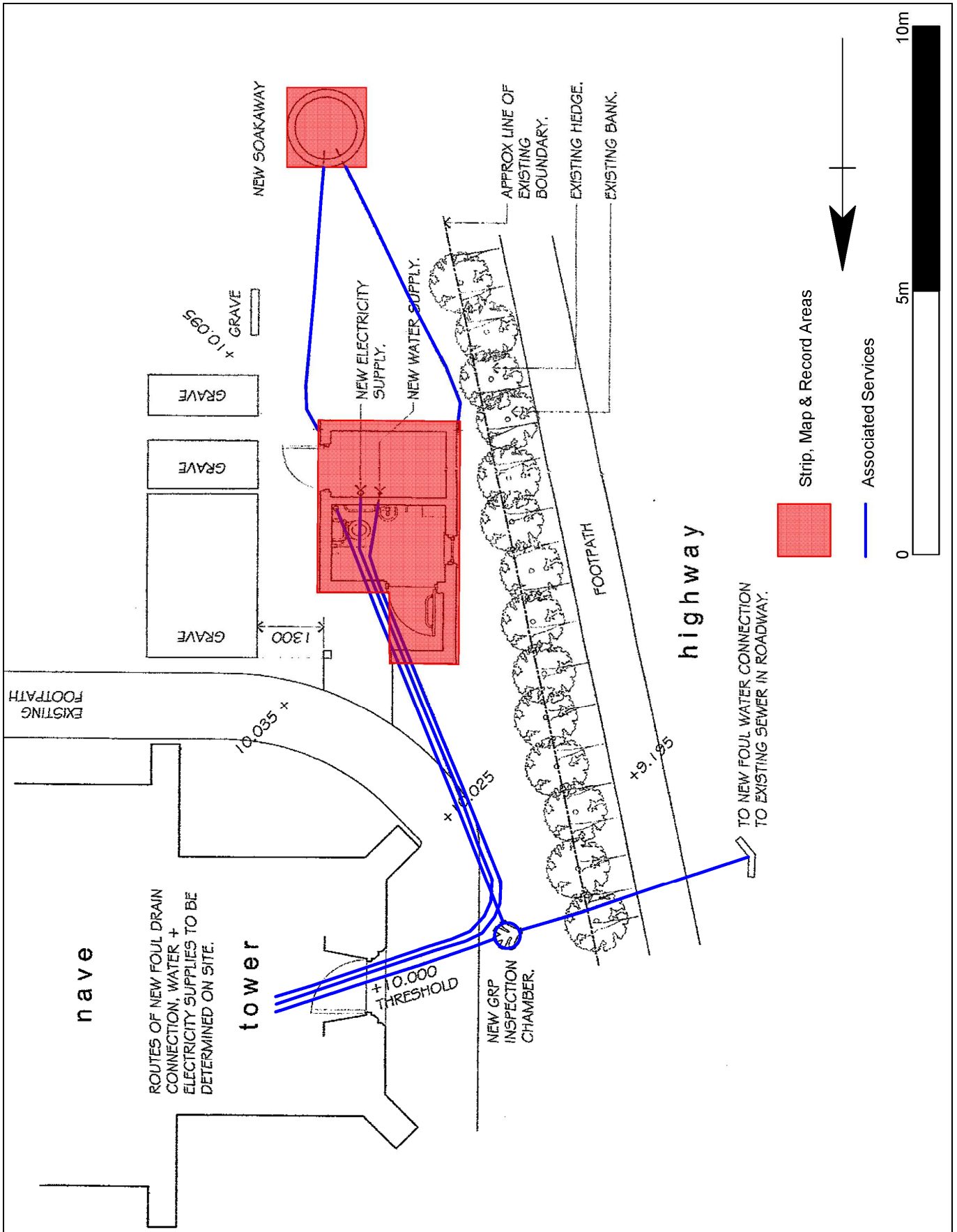


Figure 3: Proposed development and indicative excavation and watching brief area (scale 1:100)

## 2. Aims & Methods

### 2.1 *Aims*

As described in the project design (Section 3), the aims of the excavation and watching brief were:

- To investigate and record any surviving archaeological remains within the footprint of the building and soakaway, with particular attention to articulated human remains;
- To ensure continuous archaeological monitoring of all associated service trenches likely to affect archaeological remains, with particular attention to articulated human remains;
- To secure the adequate recording of any archaeological remains revealed by the development programme;
- To secure the analysis, conservation and long-term storage of any artefactual/ecofactual material recovered from the site.
- To investigate the development of the church and the churchyard, in particular to determine whether there is any evidence for an earlier church on the site

### 2.2 *Standards*

The work conformed to the project design, to the relevant sections of the Institute for Archaeologists' *Code of Conduct* (IFA 2000) and *Standard & Guidance Notes* (IFA 2001), and to the relevant sections of ASC's own *Operations Manual*.

### 2.3 *Methods*

The work was carried out according to the project design (Section 3), which required:

- Excavation under archaeological supervision within the footprint of the proposed development and associated soakaway (Fig. 4).
- An intensive watching brief on all associated service trenches (Fig. 4).

### 2.4 *Constraints*

The work was carried out primarily in line with the project design and with full cooperation of the client. However, there were a number of departures from the proposed development plan regarding the location of the service trenches (see Fig. 4 for details). Amendments to the initial report were also carried out due to the need for further groundwork's requiring another site visit.

### 3. Archaeological & Historical Background

3.1 The following section provides a summary of the readily available archaeological and historical background to the development site and its environs. The site lies within an area of archaeological and historical interest, and has the potential to reveal evidence of a range of periods.

This section has been compiled with information from Buckinghamshire Historical Environmental Record (HER) and ASC's library.

#### 3.2 *Prehistoric - Roman* (before 600BC- ADc.450)

The earliest archaeological evidence recorded in the HER for the village of Granborough dates to the Roman period. Early Roman pottery (HER 0075600000) was found c.100m northwest of the site.

#### 3.3 *Saxon - Medieval* (c.450-1500)

It is likely that the village of Granborough was established in the Saxon period. However it is not until the Domesday survey of 1086 that Granborough is first mentioned, as being in the Waddesdon Hundred, held by the Abbot of St Albans. The village is assessed at 5 hides with land for 9 ploughs; in lordship 2 hides with 2 ploughs; 7 villagers with 4 smallholders that have 7 ploughs; 1 slave, and meadow for 2 ploughs (Williams and Martin 2003:401).

The parish church of St John the Baptist (HER 0582500000) dates from the 14<sup>th</sup> century and is built of stone rubble with dressings of clunch and stone. The church consists of a chancel, nave and a west tower. The present nave was built c.1330, whilst the chancel was rebuilt between 1396 and 1401. The west tower was added and the walls of the nave were heightened in the late 15<sup>th</sup> century (RCHME 1912:118-119). A 15<sup>th</sup> century vessel (HER 0582500001) for holding christening oil was found during works to the church.

Further medieval features in the area include earthworks of a shrunken medieval village (HER 0160300000) recorded in a field survey c.300m west of the site. Also c.1.2km north of the site is a series of earthworks marking the deserted medieval village of Biggen (HER 75700). A strip, map and sample excavation was carried out by ASC in 2009 adjacent to the deserted medieval village. The project uncovered no archaeological features or deposits (Hunn 2009).

#### 3.4 *Post-Medieval - Modern* (1500-present)

St John the Baptist church is a Grade II listed building that has undergone restorations into the 19<sup>th</sup> century.

Granborough has remained a small village with a number of 16<sup>th</sup>-17<sup>th</sup> century timber-framed cottages (Pevsner and Williamson 2000:344). Examples include Sparrows Thatch (HER 1094300000), c.80m west of the site along Church Lane, and other cottages along Green End, immediately north of the site (e.g. HER 1094400000, 1094500000, 1094600000).

## 4. Results

### 4.1 *General*

The archaeological works were carried out using two methods. An excavation was carried on the area for the new toilet and soakaway, whilst a watching brief was carried out on the service and footing trenches for the new build (Fig. 4).

### 4.2 *Excavation* (Fig. 4; Plates 1 -3)

An area of c.12.70 sq m encompassing the new toilet and a 1×1m soakaway was mechanically excavated with a 1m toothless bucket. The new toilet area was initially excavated to a level of c.300mm, after which a watching brief was carried out on the footing trench within the stripped area (see section 4.2.1). The soakaway was excavated to a depth of c.0.80m max.

The site stratigraphy comprised:

00 - 100-300mm max	Topsoil/turf that consisted of dark brown, friable, clay silt with heavy rooting;
100-300 – c.750mm	Made-ground that consisted of mid slight yellowish brown, friable, silty clay with moderate small sub-angular stones, occasional small-medium sub-angular sandstone, and heavy rooting in places;
c.750-820mm	Natural strata that consisted of light brownny orange, soft/slightly firm clay.

The soakaway and the initial 300mm ground reduction uncovered no significant archaeological features, deposits, finds or human burials from the excavation areas. Towards the southwest corner of the excavation area heavy root disturbance and tree stumps were present.

A further 300mm was hand excavated in the new toilet area. The ground reduction uncovered remains of a limestone surface (see below for further details), c.0.50m BGL (below ground level). Two fragments of animal bone, one fragment of human bone and small tile fragments were also found within the made-ground.

### 4.3 *Watching Brief* (Fig. 4; Plates 2, 4-17)

An intensive watching brief was carried out on the footings for the new toilet and the associated services.

#### 4.2.1 *Footing Trench* (Plates 2, 4-10)

The footing trench for the new toilet was both mechanically excavated with a 0.23m bucket and hand excavated. The footing trench varied in depth between c.0.67-0.80m BGL (below ground level). Generally the stratigraphy comprised c.300mm max of topsoil, c.500mm max of made-ground and c.150mm of natural strata (natural strata only visible in northern end of footing trench).

A compact sub-angular limestone surface, with no bonding, was uncovered at the northern and southern ends of the footing trench during excavation. The surface also extended into the eastern end of the footing trench, which was not noticed during excavation due to the surface being less compact in this area and less noticeable. Therefore, the surface at the eastern end of the footing trench was only identified in section and measured *c.*3.60m in width.

At the northern end of the trench the maximum stone size of the surface measured *c.*170 × 110 × 80mm. At the southern end the surface had a number of stones that were flatter, measuring a maximum size of *c.*180 × 190 × 20mm. The surface at the northern end of the trench included traces of light yellowy orange loose sand underlying the stone.

The surface was visible at *c.*0.24m BGL at the northern end, *c.*0.50m BGL at the southern end, and *c.*0.28m BGL at the eastern end of the footing trench. The total surface area excavated measured at *c.*3.01 sq m, to a maximum depth of *c.*0.20m, and extended beyond the limit of excavation towards the north, east and south. No remains of the surface were uncovered in the soakaway trench.

During the excavation of the surface area a number of finds deriving from immediately above and within the surface comprised one disarticulated human bone, animal bone and tooth, glass, tile with traces of a light brown/orange mortar, post-medieval pottery and pottery with the date undetermined.

Further finds from the footing trench was a fragment of white and blue 'willow pattern' pottery dating to *c.*19<sup>th</sup> century, animal bone, clay pipe stem, iron nails, iron square fitting, iron shoe fitting, and pottery (date undetermined).

#### 4.2.2 *Service Trenches* (Plates 11-17)

Four service trenches were mechanically excavated with a 0.23m wide bucket. The stratigraphy comprised *c.*300mm of topsoil above *c.*200-600mm max of made-ground.

Service trench 1 was orientated NW-SE and measured *c.*8.50m in length, to a depth of *c.*0.50-0.90m BGL. Towards the NW end of the trench, evidence of 20<sup>th</sup> century pottery, plastic, and metal was uncovered indicating modern disturbance near to a recent man-hole.

Service trench 2 was oriented N-S and measured *c.*4m in length, to a depth of *c.*0.57-0.68m BGL. Two elongated pieces of iron were uncovered, deemed to be of little archaeological significance.

Service trench 3 was orientated NW-SE and measured *c.*2.90m in length, to a depth of *c.*0.50-0.60m BGL. The made-ground contained a glass bottle, a clay pipe stem, and an iron rivet for a fence, of little archaeological significance.

Service trench 4 was oriented SW-NE and measured *c.*4m in length, to a depth of *c.*0.70m max BGL. The made-ground contained recent disturbance of buried plastic near to the man-hole.

No significant archaeological features, deposits, finds or human burials were uncovered from the service trenches.



**Plate 1:** North facing section of soakaway, looking S (*scale 1m*)



**Plate 2:** Excavation area of new build and footing trench, looking NW (*scale 2x1m*)



**Plate 3:** New toilet area excavated a further 300mm exposing limestone surface towards the east, looking S (*scale 1m*)



**Plate 4:** Limestone surface at northern end of footing trench, looking W (*scale 1m*)



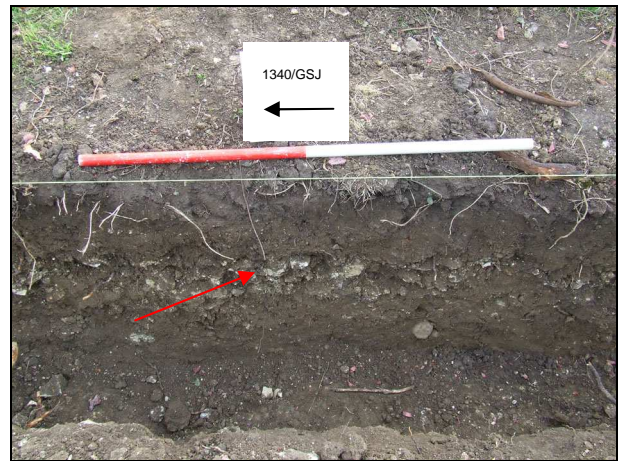
**Plate 5:** Limestone surface at northern end of footing trench, looking E (scale 1m)



**Plate 6:** Limestone surface at southern end of footing trench, looking W (scale 1m)



**Plate 7:** Limestone surface detail at southern end of footing trench, looking S (Scale 500mm)



**Plate 8:** West facing section of eastern end of footing trench highlighting limestone surface in section, looking E (scale 1m)



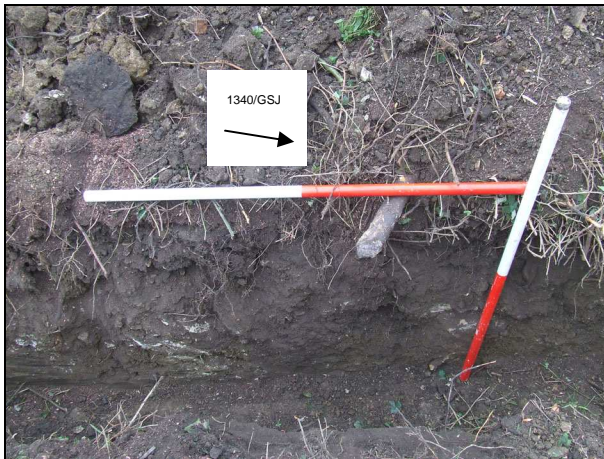
**Plate 9:** Finds deriving from limestone surface area (*scale 270mm*)



**Plate 10:** Finds deriving from footing trench  
(*scale 280mm*)



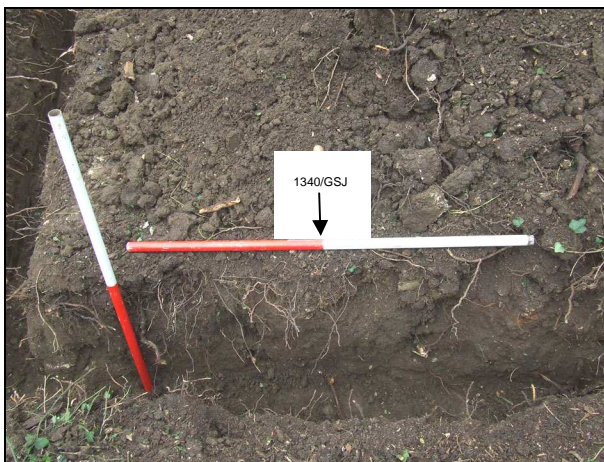
**Plate 11:** General view of service trench 1,  
looking NW (*scale 2x1m*)



**Plate 12:** NE facing section of service trench 1, looking NW (scale 2×1m)



**Plate 13:** General view of soakaway with service trench 2 and 3, looking N (scale 1m)



**Plate 14:** N facing section of service trench 3, looking S (scale 2×1m)



**Plate 15:** General view of service trench 4, looking NE (scale 1m)



**Plate 16:** E facing section of service trench 4,  
looking W (scale 2×1m)



**Plate 17:** Finds deriving from service trenches  
(scale 250mm)

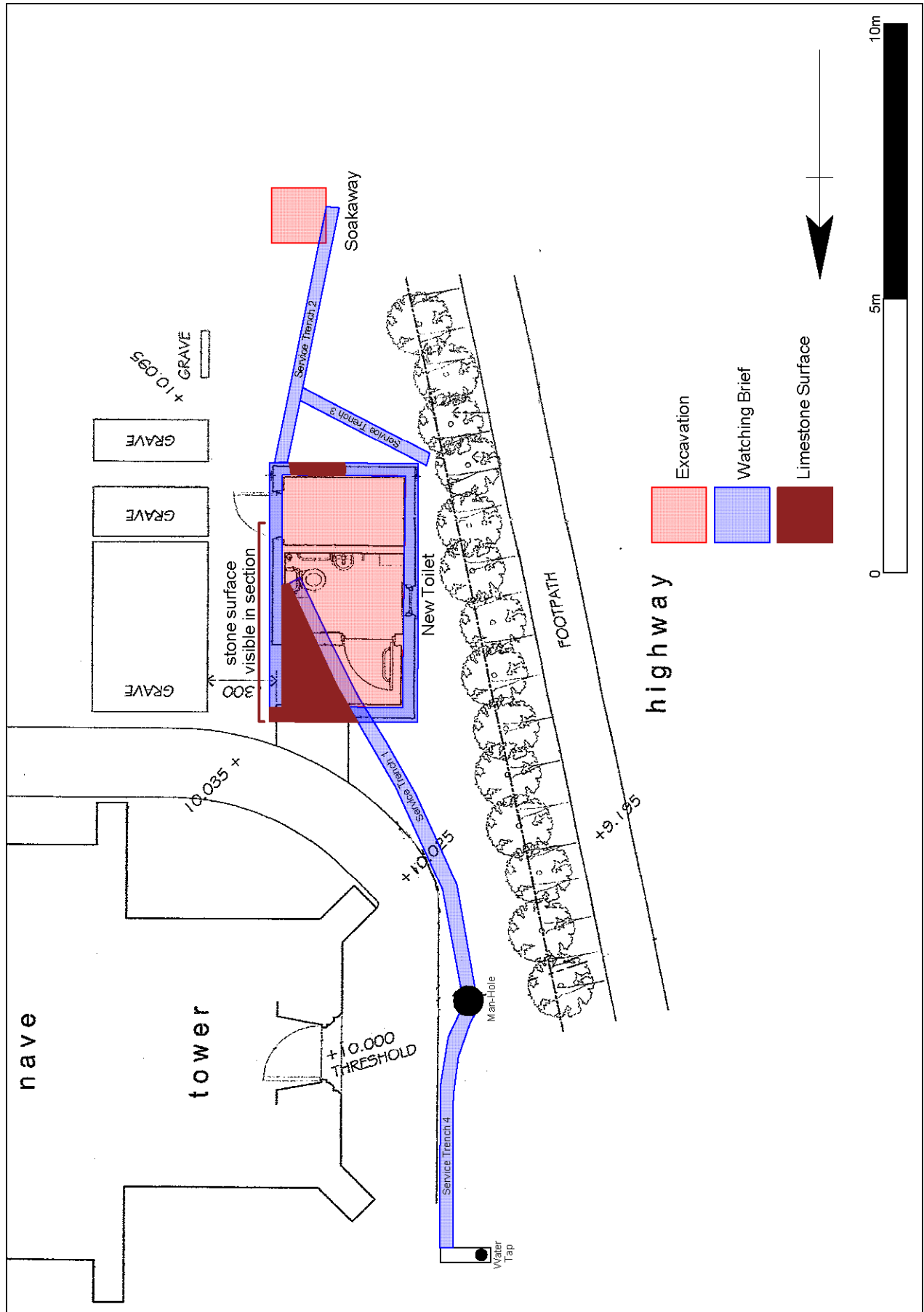


Plate 4: Development plan highlighting excavation and watching brief areas and limestone surface (scale 1:100)

## **5. Conclusions**

5.1 The archaeological works carried out in the churchyard of St John the Baptist Church uncovered no articulated human burials and only two disarticulated human bone fragments. This suggests that this area of the cemetery, towards the south-western boundary, has not been as extensively used for burials. Burials are present immediately to the east of the development area, and it is possible that burials are present below the limit of excavation.

5.2 The remains of a limestone surface were uncovered within the new toilet excavation area and footing trench, extending beyond the limit of excavation to the north, south and east. Post-medieval pottery was uncovered from the surface area, thought to be a pathway.

### **5.3 *Confidence Rating***

The project was carried out in line with the project design and with full cooperation of the client and is therefore given a high confidence rating.

## **6. Acknowledgements**

The project was commissioned by client, the Vicar and Parochial Church Council. The writer is grateful to Jenny Dean (church warden) for her assistance. The project was monitored by Eliza Alqassar of *Buckinghamshire County Archaeological Service* on behalf of the local planning authority. Thanks are also due to construction site manager Andy Dean.

The project was managed for ASC by Karin Semmelmann MA MIFA. Fieldwork was carried out by Carina Summerfield-Hill BA MSc and Martin Cuthbert BA PIFA. The report was prepared by Carina Summerfield-Hill BA MSc and edited by Bob Zeepvat BA MIFA.

## **7. Archive**

7.1 The project archive will comprise:

1. Brief
2. Project Design
3. Initial Report
4. Clients site plans
5. Site Monitoring Sheets
6. Finds records
7. Site record drawings
8. List of photographs
9. B/W prints & negatives
10. CDROM with copies of all digital files.

7.2 The archive will be deposited with *Buckinghamshire County Museum*.

## 8. References

### *Standards & Specifications*

- Buckinghamshire County Archaeological Service 2010 *Generic Brief for Archaeological Excavation (Small –Scale Projects Only)* (Aylesbury).
- Buckinghamshire County Archaeological Service 2010 *Generic Brief for Archaeological Watching Brief* (Aylesbury).
- EH 1991 *The Management of Archaeological Projects, 2<sup>nd</sup> edition*. English Heritage (London).
- IFA 2000a Institute of Field Archaeologists' *Code of Conduct*.
- IFA 2000b Institute of Field Archaeologists' *Code of Approved Practice for the Regulation of Contractual Arrangements in Field Archaeology*.
- IFA 2001 Institute of Field Archaeologists' *Standard & Guidance documents (Desk-Based Assessments, Watching Briefs, Evaluations, Excavations, Investigation and Recording of Standing Buildings, Finds)*.
- Summerfield-Hill, C 2010 *Project Design for an Archaeological Excavation and Watching Brief: St John the Baptist Church, Granborough, Buckinghamshire*. Archaeological Services and Consultancy Ltd. ASC: 1340/GSJ/1rev.

### *Secondary Sources*

- BGS *British Geological Survey 1:50,000 Series, Solid & Drift Geology*.
- Hunn, J 2009 *Strip, Map and Sample Excavation: Biggen Field, Granborough*. ASC: 1193/GBF/2.
- RCHME 1912 *Royal Commission on Historical Monuments Buckinghamshire*. Volume 2 (London).
- Soil Survey 1983 *1:250,000 Soil Map of England and Wales, and accompanying legend* (Harpenden).
- Pevsner, N and Williamson, E 2000 edition *The Buildings of England: Buckinghamshire*. Penguin Books (London).
- Williams, A and Martin, G.H. 2003 edition *Domesday Book A Complete Translation*. Penguin Books (London).

## Appendix 1: Monitoring Sheets

A.S.C. LTD		ARCHAEOLOGICAL FIELD MONITORING RECORD	
Project: ST JOHN THE BAPTIST CHURCH, GRANBOROUGH		Project No/Code: 1340 1GSJ	Sheet: 1 of 7
Client/Developer GRANBOROUGH PAROCHIAL CHURCH COUNCIL		Date of visit: 13/09/10	
Contact:		Phone:	
Duration of Visit (inc. travel):	Start: 8:30	Finish: 17:00	
Completed by: CS			
Development Type:			
Footings	Services <input checked="" type="checkbox"/>	Roads	Levelling
			Quarrying
			Pipelines
			Other (specify):
Site & weather conditions: GOOD DRY OVERCAST SITE/WEATHER			
Observations: LARGE TREE STUMP IN AREA OF NEW BUILD THAT HAD TO BE REMOVED BEFORE AREA COULD BE STRIPPED STARTED EXCAVATING SERVICE TRENCH (1) STEMMING FROM MAN-HOLE TO NEW BUILD AREA. SERVICE TRENCH (1) WILL BE FINISHED TOMORROW. EXCAVATED SOAKAWAY USING A 1M WIDE TOOTHLESS BUCKET. SOAKAWAY MEASURED 1X1M AND C.0.80M MAX DEPTH. STRATIGRAPHY COMPLETED:- TURF/TOPSOIL:- C.0.10m DARK BROWN, CLAY SILT, SOFT/FRIABLE, ROOTING. MADE-GROUND:- C.0.70m MAX MID BROWN WITH CONCENTRATIONS OF MID BROWNISH YELLOW, SOFT, SLIGHTLY SILTY CLAY, MODERATE SMALL SUB-ANGULAR STONES, OCCASIONAL SMALL PIECES OF RED BRICK, MODERATE TREE ROOTING.			
Comments:			



A.S.C. LTD

ARCHAEOLOGICAL FIELD MONITORING RECORD

Project: ST JOHN THE BAPTIST CHURCH		Project No/Code: 1340 1 GSJ	Sheet: 2 of 7
Granborough		Date of visit: 14/09/10	
Client/Developer Granborough Parochial Church Council			
Contact: SITE: ANDY DEAN MANAGER		Phone: 07866808053	
Duration of Visit (inc. travel):	Start: 7:20	Finish: 16:00	
Completed by: CS			
Development Type:			
Footings <input checked="" type="checkbox"/>	Services	Roads	Levelling
			Quarrying
			Pipelines
			Other (specify):
Site & weather conditions: GOOD SITE CONDITIONS / OVERCAST / WINDY WEATHER			
Observations: CONTINUED OBSERVATION OF SERVICE TR (1) HEAVY TREE ROOTING SLOWING THE WORK DOWN. SERVICE TR (1) MEASURED C. 0.30m IN WIDTH USING A 0.23m BUCKET. DEPTH VARIED BETWEEN C. 0.90m AT NW AND TO C. 0.50m AT SE. STRATIGRAPHY COMPRISED: TOPSOIL / TURF: C. 0.30m MAX DARK, CLAY SILT, FRIABLE, HEAVY ROOTING. MADE-GROUND: C. 0.20-0.60m MID SLIGHT YELLOW BROWN, FRIABLE, SILTY CLAY, MODERATE SMALL SUB-ANGULAR STONES, OCCASIONAL SMALL-MEDIUM SUB-ANGULAR SANDSTONE, HEAVY ROOTING IN PLACES. TOWARDS THE NW END OF TRENCH SEEING DISURDANCE EVIDENCE OF MODERN POTTERY, METAL, PLASTIC, ETC. NO ARCHAEOLOGICAL FINDS OR FEATURES WITH SERVICE TRENCH (1). EXCAVATED SERVICE TRENCHES (2) + (3) STEMMING FROM SEAWAY TO NEW BUILD AREA. A 0.23m BUCKET USED. SERVICE TR (2) MEASURED C. 0.57-0.68m BGL SERVICE TR (3) MEASURED C. 0.50-0.60m BGL			
Comments: WITH SERVICE TRENCH (1). EXCAVATED SERVICE TRENCHES (2) + (3) STEMMING FROM SEAWAY TO NEW BUILD AREA. A 0.23m BUCKET USED. SERVICE TR (2) MEASURED C. 0.57-0.68m BGL SERVICE TR (3) MEASURED C. 0.50-0.60m BGL			

## Monitoring Sheet 2 Continued

SERVICE TR (3) DISTURBED/MADE-GROUND CONTAINS  
GLASS BOTTLE, CLAY PIPE STEM, METAL RIVET FOR A  
FENCE (IRON)

SERVICE TR (2) TWO PIECES OF IRON

SAME STRATIGRAPHY AS SERVICE TR (1)



A.S.C. LTD

ARCHAEOLOGICAL FIELD MONITORING RECORD

Project: ST JOHN THE BAPTIST CHURCH, GRANBOROUGH		Project No/Code: 1340 / GSJ	Sheet: 3 of 7
Client/Developer: GRANBOROUGH PAROCHIAL CHURCH COUNCIL		Date of visit: 16/09/10	
Contact: ANNA DEAN - SITE MANAGER		Phone:	
Duration of Visit (inc. travel):	Start: 7:45	Finish: 13:00	
Completed by: CS			
Development Type:			
Footings <input checked="" type="checkbox"/>	Services	Roads	Levelling
			Quarrying
			Pipelines
			Other (specify):
Site & weather conditions: GOOD SITE CONDITIONS, DRY OVERCAST WEATHER			
Observations: OBSERVED EXCAVATION OF SERVICE TRENCH (4) STEMMING FROM MAN-HOLE TO WATER TAP. TRENCH MEASURED C. 4 M (L) 0.30m (W) C. 0.70m MAX (D). MODERN DISTURBANCE AROUND MAN-HOLE AND BURIED RUBBISH I.E. PLASTIC. SAME STRATIGRAPHY AS PREVIOUS SERVICE TRENCHES			
Comments: WILL RETURN ON MONDAY AFTERNOON FOR NOW BUILD EXCAVATION AREA AND TIGHTEN TRENCHES.			



A.S.C. LTD

ARCHAEOLOGICAL FIELD MONITORING RECORD

Project: ST JOHN THE BAPTIST CHURCH, GRANBOROUGH, BUCKS		Project No/Code: 1340/GSJ	Sheet: 4 of 7
Client/Developer: GRANBOROUGH PARISHIAL CHURCH COUNCIL		Date of visit: 20/09/10	
Contact: ANDY DEAN - SITE MANAGER		Phone:	
Duration of Visit (inc. travel):	Start: 13:00	Finish: 17:00	
Completed by: CS			
Development Type:			
Footings <input checked="" type="checkbox"/>	Services	Roads	Levelling
			Quarrying
			Pipelines
			Other (specify):
Site & weather conditions: GOOD DRY SITE / UNSTABLE			
Observations: OBSERVED GROUND REDUCTION OF THE DEVELOPMENT AREA C. 4.70 x 2.70 m sq TO A DEPTH OF C. 300mm. NO ARCHAEOLOGICAL FINDS, FEATURES OR BURIALS WERE OBSERVED. FOOTING TRENCHES STARTED TO BE EXCAVATED TOWARDS THE END OF THE DAY UNCOVERED AN AREA OF STONE WITHIN NORTHERN SEGMENT OF FOOTING TRENCH THAT IS TO BE EXCAVATED TOMORROW.			
Comments: Will RETURN TOMORROW TO FINISH OFF FOOTING TRENCH AND EXCAVATE STONE AREA.			



A.S.C. LTD

ARCHAEOLOGICAL FIELD MONITORING RECORD

Project: ST JOHN THE BAPTIST CHURCH, GRANBOROUGH, BUCKS		Project No/Code: 1340 / GSJ	Sheet: 5 of 7
Client/Developer: GRANBOROUGH PARISHIAL CHURCH COUNCIL		Date of visit: 21/09/10	
Contact: ANDY DEAN - SITE MANAGER		Phone:	
Duration of Visit (inc. travel):	Start: 7:30	Finish: 15:00	
Completed by: CB			
Development Type:			
Footings <input checked="" type="checkbox"/>	Services	Roads	Leveling
			Quarrying
			Pipelines
			Other (specify):
Site & weather conditions: GOOD, DRY SUNNY SITE   WEATHER			
Observations: AREA OF STONE FOUND WITHIN NORTHERN SEGMENT OF FOOTING TRENCH WAS CLEANED. APPEARS TO BE A SURFACE. TOWARDS THE WESTERN END OF SURFACE THE FEATURE IS CUT BY A SERVICE TRENCH. THE SURFACE IS NOT VISIBLE ALONG THE WESTERN SEGMENT OF THE FOOTING TRENCH. SURFACE EXTENDS BEYOND THE LIMIT OF EXCAVATION AND IS VISIBLE IN THE EASTERN SEGMENT OF THE FOOTING TRENCH (IN SECTION) ALTHOUGH THE STONES ARE LESS COMPACT IN THIS AREA. THE SURFACE AREA WITHIN THE NORTHERN SEGMENT OF THE FOOTING TRENCH IS MADE UP OF A LAYER OF LIGHT BROWN/YELLOW/ ORANGE LOOSE SAND THAT IS SLIGHTLY MORE COMPACT IN PLACES. OVERLYING WHICH IS A LAYER OF SUB-ANGULAR CLUNCH STONE. MAXIMUM SIZE OF STONE MEASURED C. 17cm (L) x c. 11cm (W) x c. 8cm MAX DEPTH. NO BONDING MATERIAL BETWEEN STONES. SURFACE IS VISIBLE C. 0.24m BGL. DEPTH OF SURFACE MEASURED C. 0.20m MAX			
Comments: LAYER OF SUB-ANGULAR CLUNCH STONE. MAXIMUM SIZE OF STONE MEASURED C. 17cm (L) x c. 11cm (W) x c. 8cm MAX DEPTH. NO BONDING MATERIAL BETWEEN STONES. SURFACE IS VISIBLE C. 0.24m BGL. DEPTH OF SURFACE MEASURED C. 0.20m MAX			

## Monitoring Sheet 5 Continued

SURFACE IS UNDERLYING TOPSOIL WITHIN MADE-GROUND/  
CEMETERY SOIL.

Whilst cleaning surface area finds uncovered  
were:-

- THREE PIECES OF RED TILE WITH DARK GRAY CENTRES,  
TRACES OF LIGHT BROWN ORANGE MORTAR ATTACHED TO  
TILE SURFACES.
- LEFT ZYGOMATIC HUMAN BONE (SKULL AREA)
- ANIMAL BONE + TOOTH
- CERAMIC POTTERY RIM
- GLASS
- 3 SHEKDS OF POTTERY:-
  - 1 SILKED ORANGE POTTERY  
- MODERN
  - 2 SHEKDS WITH ORANGE  
OUTER + INNER SURFACES  
AND A DARK GRAY MIDDLE  
FABRIC.

CONTINUED TO OBSERVE FOOTING TRUNCIES PARTLY HAND  
EXCAVATED AND MACHINED. TOWARDS THE SOUTHERN  
END OF WESTERN SEGMENT AND THE SOUTHERN SEGMENT  
HEAVY TREE ROOTING SLOWING DIGGING DOWN.



A.S.C. LTD

ARCHAEOLOGICAL FIELD MONITORING RECORD

Project: ST JOHN THE BAPTIST CHURCH GRANBOROUGH, BUCKS		Project No/Code: 1340 1GSJ	Sheet: 6 of 7
Client/Developer: GRANBOROUGH PARISHIAL CHURCH COUNCIL		Date of visit: 22/09/10	
Contact: ANDY DEAN - SITE MANAGER		Phone:	
Duration of Visit (inc. travel):	Start: 7:45	Finish: 15:45	
Completed by: CS			
Development Type:			
Footings <input checked="" type="checkbox"/>	Services	Roads	Levelling
			Quarrying
			Pipelines
			Other (specify):
Site & weather conditions: GOOD DRY SUNNY SITE / WEATHER			
Observations: CONTINUED OBSERVATION OF HAND EXCAVATION OF FOOTING TRENCH.			
STRATIGRAPHY :-			
WESTERN SEGMENT OF FOOTING TRENCH :- 0.80m (D)			
c. 300mm AUTO TOPSOIL / TURF			
c. 300mm MADE-GROUND			
EASTERN SEGMENT OF FOOTING TRENCH :- c.0.74m (D)			
c. 200mm TURF / TOPSOIL			
c. 80mm MADE-GROUND			
c. 180mm MAX LAYER OF LOOSE CLINCH STONE			
c. 250mm MADE-GROUND			
NORTHERN SEGMENT OF FOOTING TRENCH :- c.0.82m (D)			
c. 0.25m TURF / TOPSOIL			
c. 0.12m STONE SURFACE			
Comments: c.0.38m MADE-GROUND			
c. 0.15m NATURAL STRATA :- LIGHT BROWN / ORANGE, SOFT / SLIGHTLY FIRM CLAY.			
SOUTHERN SEGMENT OF FOOTING TRENCH: c.0.67m (D)			
c. 0.15m TOPSOIL / TURF			
c. 0.24-0.30m MADE-GROUND			
c. 0.15-0.20m SURFACE			

## Monitoring Sheet 6 Continued

SURFACE LAYER VISIBLE IN EASTERN SEGMENT OF FOOTING TRENCH, VISIBLE IN SECTION C. 3.6m IN LENGTH.

IN THE SOUTHERN SEGMENT OF THE FOOTING TRENCH REMAINS OF STONE SURFACE UNCOVERED. AREA SPANS C. 1m IN LENGTH, C. 0.50m BELOW GROUND LEVEL. NO BONDING MATERIAL PRESENT. NO LIGHT SANDY LAYER LIKE IN NORTHERN SEGMENT OF SURFACE.

NUMBER OF STONES FLATTER MEASURING C. 19cm (W) x 18cm (L) x 2cm (D) MAX.

FINDS ASSOCIATED WITH SURFACE:- RED TILE FRAG  
1 SHERD POTTERY/TILE  
ORANGE OUTER/INNER  
SIDES, GREY IN THE  
MIDDLE.

FURTHER FOOTING TRENCH FINDS:-  
CERAMIC POTTERY WITH BLUE FLORAL DECORATION, ANIMAL  
BONE, CLAY PIPE STEM, 3 IRON NAILS, IRON SQUARE  
FITTING, IRON SHOE FITTING, POTTERY- OUTER SURFACE  
ORANGE; INNER SURFACE GREY.



A.S.C. LTD

ARCHAEOLOGICAL FIELD MONITORING RECORD

Project: Granborough church		Project No/Code: 1340 / GSJ	Sheet: 7 of 7
Client/Developer		Date of visit: 6/10/10	
Contact: Josh and Andy		Phone: 07866 808053	
Duration of Visit (Inc. travel):	Start: 07:50	Finish: 13:00	
Completed by: M.C			
Development Type:			
Footings <input checked="" type="checkbox"/>	Services	Roads	Levelling
			Quarrying
			Pipelines
			Other (specify):
Site & weather conditions: drizzly - wet underfoot			
Observations:			
<ul style="list-style-type: none"> <li>• whole toilet area being reduced by a further 300mm - by hand.</li> <li>• Stone surface seen to the east of the internal drain run but not to the west, c. 200mm down. large limestone flags no mortar. (see sketch)</li> <li>• Stone surface seen in footing trench on South side <sup>is</sup> not reached in this new ground reduction.</li> <li>• large modern tree rooting has disturbed whole SW corner (see sketch)</li> </ul>			
<p>Three bone frags - one possible human - two animal were discovered in the mid yellowish brown made ground, along with small tile frags (not retained)</p>			
Comments:			
<p>no more groundworks to be done on site Andy will ring to confirm this due to screw ups with architect.</p>			

## Appendix 2: Finds Concordance

Context	Pottery	Bone	Other Finds	
	(no)	(no)	Type	(no)
Limestone Surface (excavation and watching brief areas)	4 sherds 1 rim	3 animal bone 1 animal tooth 1 zygomatic bone (human) 1 human bone	Tile Glass	7 frags 2 frags
Footing Trench (made-ground)	2 sherds	3 animal bone	Iron nail Iron square fitting Iron shoe fitting Clay pipe stem	3 1 1 1
Service trenches (made-ground)			Glass bottle Clay pipe stem Iron fence fitting Metal handle Iron nail Elongated pieces of iron Metal circular disc	1 1 1 1 1 2 1

**Note:** Finds were deemed to be of little archaeological significance and were kept by the church, while the disarticulated human bone fragments are to be re-interred.

### Appendix 3: List of Photographs

SITE NAME: St John the Baptist Church, Granborough, Buckinghamshire		SITE NO/CODE: 1340/GSJ
Shot No. B&W	Shot No. Digital	Subject
1	1	North facing section of soakaway, looking S (1m scale) (13/09/10)
	2	General view of development area, looking W (13/09/10)
	3	General view of church, looking SE (13/09/10)
2	4	Service trench 1, looking SE (2x1m scale) (14/09/10)
3	5	Service trench 1, looking NW (2x1m scale) (14/09/10)
4	6	NE facing section of service trench 1, looking SW (2x1m scale) (14/09/10)
	7	Finds deriving from service trenches (250mm scale) (14/09/10)
5	8	Service trench 2, looking N (1m scale) (14/09/10)
	9	General view of development area, looking NW (1m scale) (14/09/10)
6	10	Service trench 3, looking NW (1m scale) (14/09/10)
7	11	N facing section of service trench 3, looking S (2x1m scale) (14/09/10)
8	12	E facing section of service trench 4, looking W (2x1m scale) (16/09/10)
9	13	Service trench 4, looking NE (1m scale) (16/09/10)
10	14	Stone surface at northern end of footing trench, looking W (1m scale) (21/09/10)
11	15	Stone surface at northern end of footing trench, looking W (1m scale) (21/09/10)
12	16	Stone surface at northern end of footing trench, detail, looking S (500mm scale) (21/09/10)
13	17	Stone surface at northern end of footing trench, detail, looking S (500mm scale) (21/09/10)
	18	Stone surface at northern end of footing trench, detail, looking S (500mm scale) (21/09/10)
	19	Stone surface at northern end of footing trench, detail, looking S (500mm scale) (21/09/10)
14	20	Stone surface at northern end of footing trench, looking NE (1m scale) (21/09/10)
	21	Stone surface at northern end of footing trench, looking E (1m scale) (21/09/10)
15	22	W facing section of footing trench at eastern end, looking E (1m scale) (21/09/10)
16	23	Stone surface at southern end of footing trench, looking W (1m scale) (22/09/10)
	24	Stone surface at southern end of footing trench, looking W (1m scale) (22/09/10)
17	25	Stone surface at southern end of footing trench, detail, looking S (500mm scale) (22/09/10)
18	26	Stone surface at southern end of footing trench, detail, looking S (500mm scale) (22/09/10)
	27	Stone surface at southern end of footing trench, detail, looking S (500mm scale) (22/09/10)
	28	Stone surface at southern end of footing trench, looking S (22/09/10)
	29	Stone surface at southern end of footing trench, looking S (22/09/10)
	30	Stone surface at southern end of footing trench, looking S (22/09/10)
	31	Finds deriving from stone surface (300mm scale) (22/09/10)
	32	Finds deriving from stone surface (300mm scale) (22/09/10)
	33	S facing section of northern end of footing trench, looking N (1m scale) (22/09/10)

<b>SITE NAME:</b> St John the Baptist Church, Granborough, Buckinghamshire		<b>SITE NO/CODE:</b> 1340/GSJ
<b>Shot No. B&amp;W</b>	<b>Shot No. Digital</b>	<b>Subject</b>
	34	N facing section of southern end of footing trench, looking S (1m scale) (22/09/10)
19	35	S facing section of southern end of footing trench, looking N (1m scale) (22/09/10)
	36	Finds deriving from footing trench (300mm scale) (22/09/10)
20	37	General view of excavation area of new build and footing trench, looking NW (2x1m scale) (22/09/10)
21	38	General view of excavation area of new build and footing trench, looking SW (2x1m scale) (22/09/10)
	39	Further ground reduction in area of new build, looking S (1m scale) (06/10/10)
	40	Further ground reduction in area of new build, looking S (1m scale) (06/10/10)

## Appendix 4: ASC OASIS Form

PROJECT DETAILS			
Project Name:	St John the Baptist Church, Granborough, Buckinghamshire	OASIS reference:	archaeol2-80145
Short Description:	In September/October 2010 Archaeological Services and Consultancy Ltd carried out an excavation and watching brief at St John the Baptist Church, Granborough, Buckinghamshire during the development of a new toilet and associated services. The development area was void of any articulated human burials, with two fragments of disarticulated human bone. A limestone surface was excavated that is likely post-medieval in date.		
Project Type:	Excavation and Watching Brief		
Previous work: (eg. SMR refs)	N/a	Site status: (eg. none, SAM, listed)	Listed
Current land use:	Church yard	Future work: (yes/no/unknown)	Unknown
Monument type:	Church	Monument period:	14 <sup>th</sup> Century
Significant finds: (artefact type & period)	Limestone surface		
PROJECT LOCATION			
County:	Buckinghamshire	OS reference: (8 figs min)	SP 7678 2500
Site address: (+ postcode if known)	St John the Baptist Church, Marston Road/Green End, Granborough, Buckinghamshire, MK18 3NS		
Study area: (sq. m. / ha)	c.108 sq m	Height OD: (metres)	c.110 m OD
PROJECT CREATORS			
Organisation:	Archaeological Services & Consultancy Ltd		
Project brief originator:	Buckinghamshire County Archaeology Service	Project design originator:	Carina Summerfield-Hill BA MSc (ASC Ltd)
Project Manager:	Karin Semmelmann MA MIFA (ASC Ltd)	Supervisor:	Carina Summerfield-Hill BA MSc (ASC Ltd)
Sponsor / funding body:	Parochial Church Council		
PROJECT DATE			
Fieldwork start date:	13/09/10	Fieldwork end date:	06/10/10
PROJECT ARCHIVES			
	Location (Accession no.)	Content (eg. pottery, animal bone, files/sheets)	
Physical:	Buckinghamshire County Museum	N/a	
Paper:		PD, Report, Site Records, B&W photos and negatives	
Digital:		All digital files onto a CD	
BIBLIOGRAPHY (Journal/monograph, published or forthcoming, or unpublished client report)			
Title:	Excavation and Watching Brief: St John the Baptist Church, Granborough, Buckinghamshire		
Serial title & volume:	ASC Ltd Report ref. 1340/GSJ/3		
Author(s):	Carina Summerfield-Hill BA MSc		
Page nos	33	Date:	15/11/10